

The HELLA logo is positioned in the top left corner. It consists of the word "HELLA" in a bold, black, sans-serif font. The letter "E" is stylized with three horizontal bars in red, yellow, and blue.A detailed 3D cutaway illustration of a roller shutter mechanism. The top part shows the curved housing with a circular opening where the shutter is rolled up. The shutter itself is composed of multiple horizontal slats, some of which are highlighted in a vibrant blue color. The slats are connected by a series of rollers and a central cable system. The bottom part of the image shows the vertical track and the mounting bracket that secures the shutter to the building's frame.

ROLLER SHUTTERS

nova
FRONT-MOUNTED
ROLLER SHUTTER

From a purely optical point of view, front-mounted roller shutters guarantee an exceptional design flexibility for the overall architectural impression of a house. Whether round or square, this ideal sun and weather protection matches every characteristic building style.

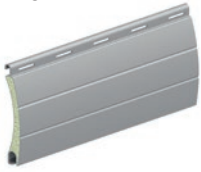
nova FRONT-MOUNTED ROLLER SHUTTER

Due to the small size of the box a subsequent installation is possible under all window lintels. The front-mounted roller shutter proves its true strength with its extremely efficient protection against cold and heat. The energy saver!

All designs are also available with additional insulation.

Profile types

A37



AV42



A52



A37 - A52: The hollow space of the double-walled, roll formed aluminium profiles with light and ventilation slots are foam filled. The outer surfaces of the profiles, which are locked over the entire height, are coated with thick lacquer. 2 or 3 grooves.

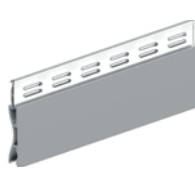
K37



K52



T37



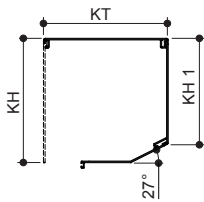
S37



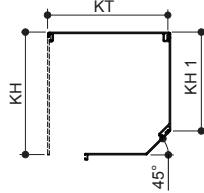
K37, K52: Plastic profile, double-walled, with light and ventilation slots, 2 or 3 grooves, made of extruded, coloured plastic
T37: Daylight profile made of aluminium, extruded, double-walled, without grooves, intermediate profile made of translucent plastic, with ventilation slots
S37: Safety profile made of aluminium, double-walled, extruded and high-strength, foam-free with light and ventilation slots, 2 grooves



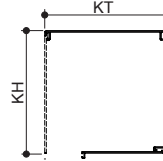
nova NVS:
square-slanted box 27°
extruded



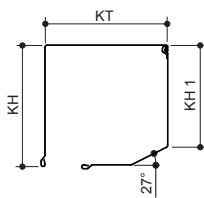
nova NWS:
slanted box 45°
extruded



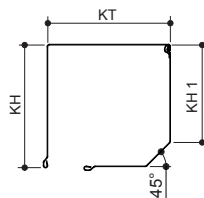
nova NQS:
square box
extruded



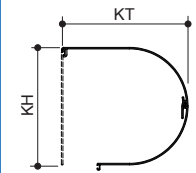
nova NVR:
square-slanted box 27°
rollformed



nova NWR:
slanted box 45°
roll-formed



nova NRS:
round box
extruded



Type	NVS / NVR			NWS / NWR			NQS		NRS	
	KH mm	KT mm	KH 1 mm	KH mm	KT mm	KH1 mm	KH mm	KT mm	KH mm	KT mm
11	115	115	95	---	---	---	115	115	115	122
13	139	139	118	139	139	112	139	139	139	150
13 XL	139	159	118	139	159	112	139	159	139	167
16	169	169	140	169	169	132	169	169	169	177
16 XL	169	186	140	---	---	---	---	---	169	193
18	185	185	152	185	185	143	185	185	185	193
20	209	209	170	209	209	158	---	---	209	219

KH = box height, KT = box depth, KH 1 = box height 1

Limit sizes	A37	AV42	A52	K37	K52	T37	S37
Max. element width [mm]	3000	3500	3500	1800	2300	2500	2500
Max. element height [mm]	4000	3450	2900	3000	2700	2300	3000
Max. surface [m²]	7.5	8	10	3.1	4.5	5	6.5
Profile thickness [mm]	8.2	9.3	13	8.2	14	8.5	8.5
Covering width [mm]	37	42	52	37	52	38.4	37
Weight [kg per m²]	2.6	2.85	3	3	3.5	9.05	7

Subject to modifications.