

HELLA

ROLLER SHUTTERS

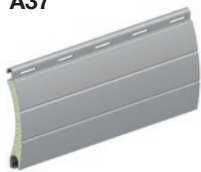


nova **PLASTER BASE**

nova front-mounted roller shutters with plaster base are ideal for installation in a camber chase. In this way, the roller shutter discreetly blends in with every facade. Once plastered, the roller shutter box is no longer visible. There is no thermal bridge into the interior of the room.

Profile types

A37



AV42



A52



A37 - A52: The hollow space of the double-walled, roll formed aluminium profiles with light and ventilation slots are foam filled. The outer surfaces of the profiles, which are locked over the entire height, are coated with thick lacquer. 2 or 3 grooves.

K37



K52



T37



S37

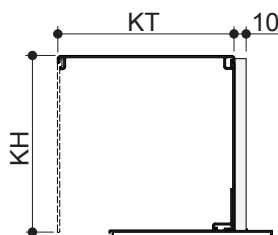


K37, K52: Plastic profile, double-walled, with light and ventilation slots, 2 or 3 grooves, made of extruded, coloured plastic
 T37: Daylight profile made of aluminium, extruded, double-walled, without grooves, intermediate profile made of translucent plastic, with ventilation slots
 S37: Safety profile made of aluminium, double-walled, extruded and high-strength, foam-free with light and ventilation slots, 2 grooves

Design model



nova NQPA:
Plaster base element square box



Aluminium box extruded

Type	Box height (KH) mm	Box depth (KT) mm	Box height 1 (KH1) mm	Box height 2 (KH2) mm
11	115	115	95	---
13	139	139	118	112
13 XL	139	159	118	112
16	169	169	140	132
18	185	185	152	143

Limit sizes	A37	AV42	A52	K37	K52	T37	S37
Max. element width [mm]	3000	3500	3500	1800	2300	2500	2500
Max. element height [mm]	4000	3450	2900	3000	2700	2300	3000
Max. surface [m ²]	7.5	8	10	3.1	4.5	5	6.5
Profile thickness [mm]	8.2	9.3	13	8.2	14	8.5	8.5
Covering width [mm]	37	42	52	37	52	38.4	37
Weight [kg per m ²]	2.6	2.85	3	3	3.5	9.05	7